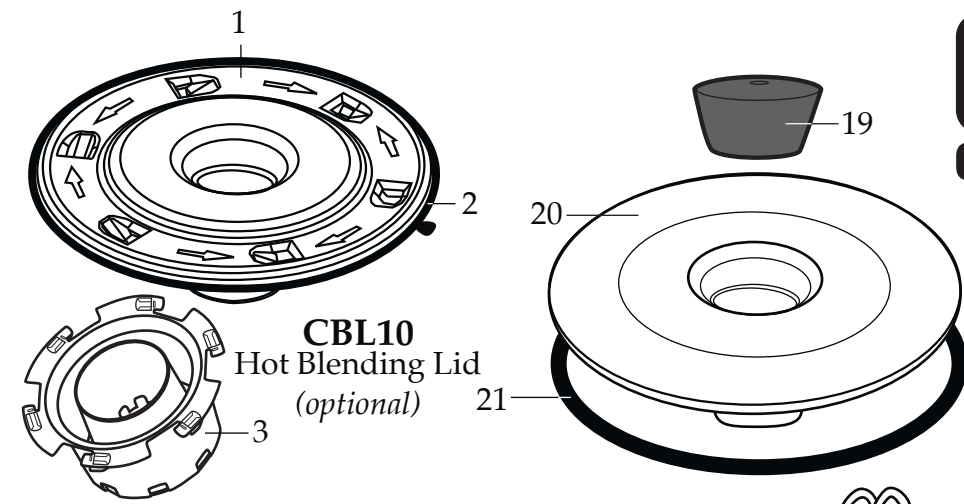
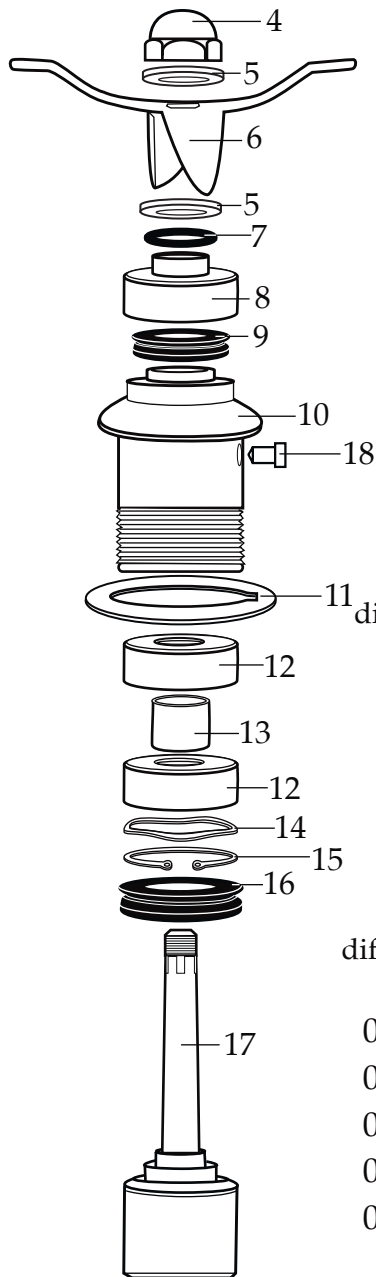


## FMI Gallon Blender CB10J



**CBL10**  
Hot Blending Lid  
(optional)



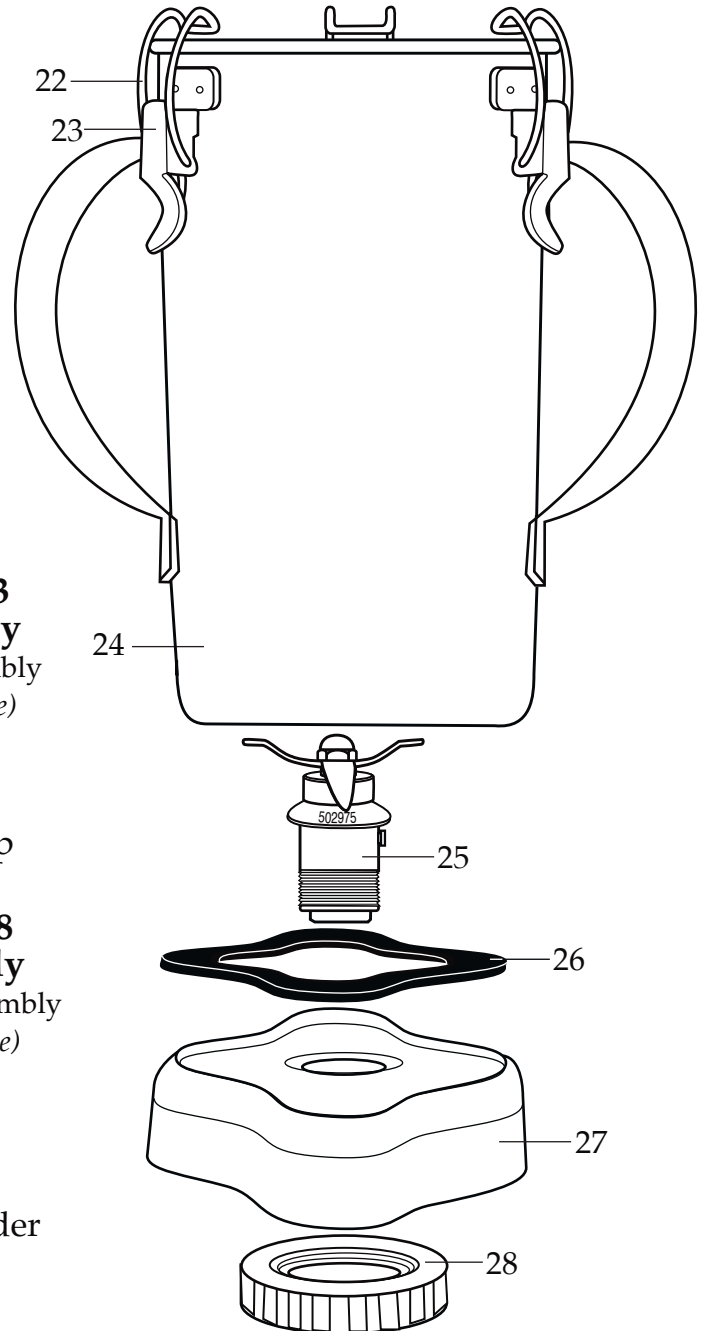
**Parts to old 502493  
Blending Assembly**  
different from new Assembly  
(limited quantities available)

- 018397 - Washer
- 018388 - O Ring
- 023903 - Bearing Cap

**Parts to old 501838  
Blending Assembly**  
different from 502493 Assembly  
(limited quantities available)

- 018396 - Blade
- 018387 - Spacer
- 018394 - Drive Shaft
- 018438 - Bearing Holder
- 018383 - Bearing Cap

**502975 or 502493X**  
Blending Assembly  
(replaces 502493)

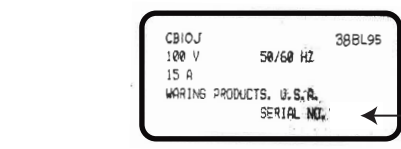
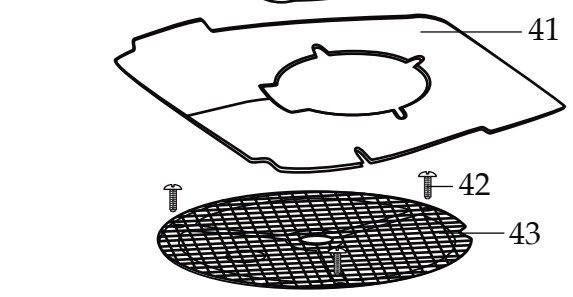
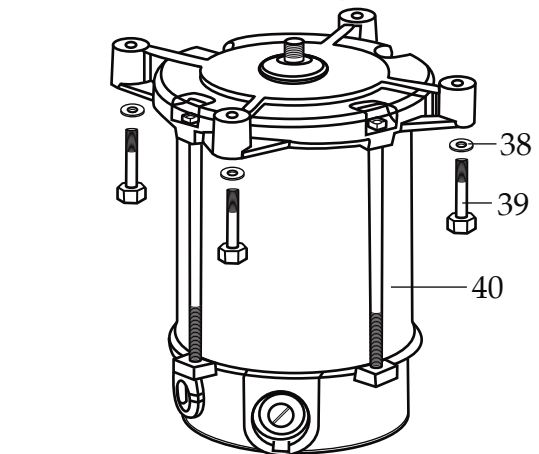
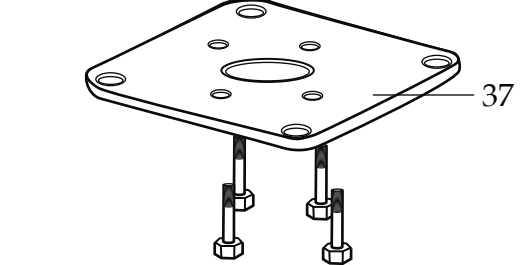
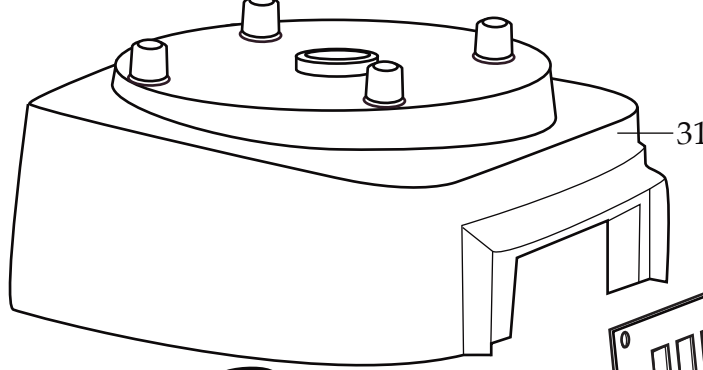
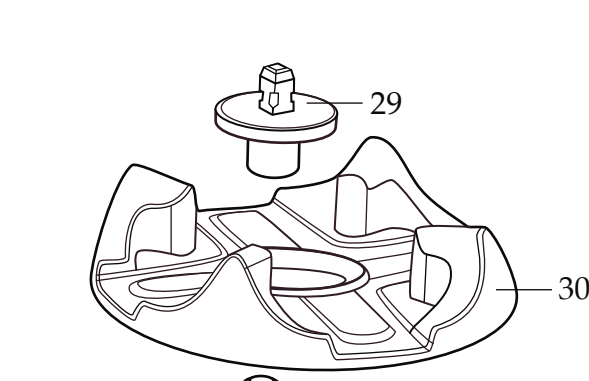


**501866 - Container with Blending Assembly**  
**70453J - Container Complete with Stainless Steel Lid**



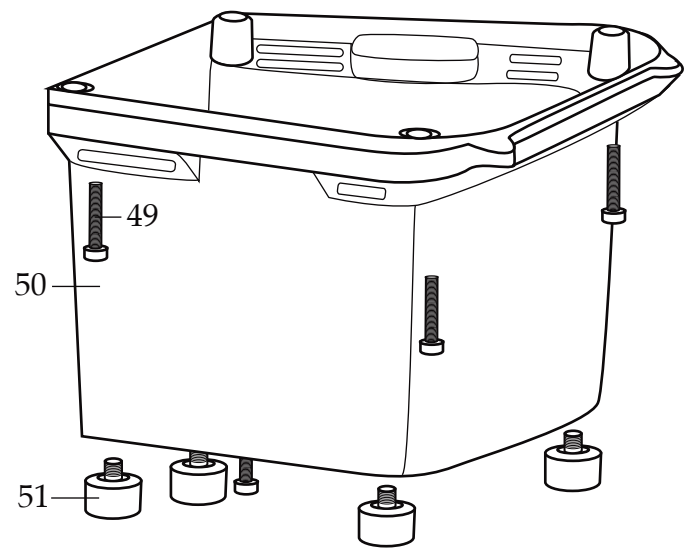
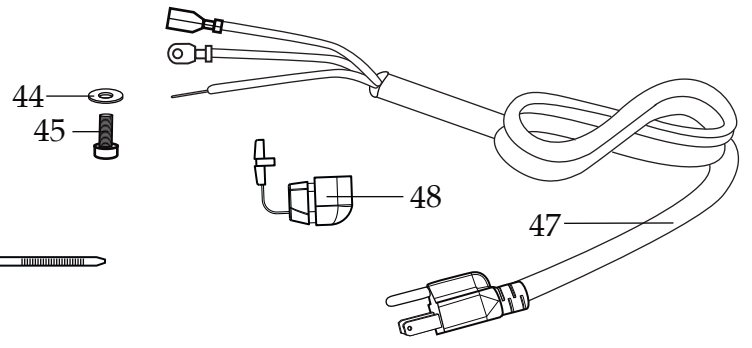
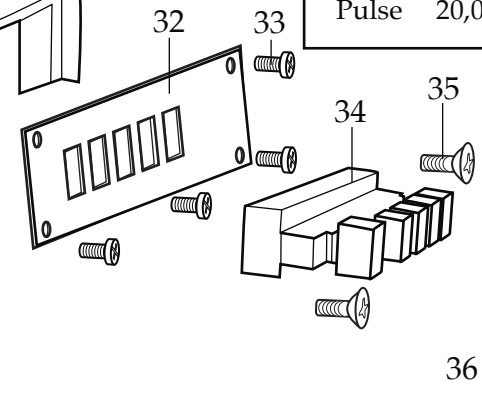
# FMI Gallon Blender CB10J

**017298**  
Grounding Adapter



← Date Code Location  
YY|MM|DD  
year|year|month|month|day|day

Unit Information			
3 HP 15 Amps.			
Speeds	RPM's Free	RPM's with 2 Qts. Water	RPM's with 4 Qts. Water
HI	20,000	15,000	13,000
MED	18,300	13,000	11,500
LOW	15,000	11,500	10,000
Pulse	20,000	15,000	13,000



**Catalog#**  
CB10J

**Model**  
38BL95



<b>Illustration#</b>	<b>Part#</b>	<b>Description</b>
1	024000	Outer Lid /polycarbonate for hot blending
2	026496	Gasket /plastic outer lid
3	023998	Baffle Cup for hot blending lid
4	002972	Cap Nut
5	027581	Washer /flat
6	024196	Blade
7	018389	"O" Ring
8	027582	Bearing Cap
9	018390	"V" Ring /small
10	023934	Bearing Holder
11	004946	Washer /teflon
12	018386	Bearing
13	023926	Spacer
14	023907	Spring Washer
15	023927	Retaining Ring
16	023906	"V" Ring /large
17	023933	Drive Shaft
18	025817	Key
19	013470	Stopper
20	013469	Stainless Steel Outer Lid
21	017442	Gasket /stainless steel lid
22	008791	Latch Wire (3 required)
23	502773	Bracket Assy. /spot welded to container (3 required)
24	023909	Double Handle Container
25	502975	Blending Assembly /complete
26	004949	Gasket /container base
27	025571	Container Support /container base
28	012008	Lock Nut
29	502696	Coupling Assembly
30	025871	Jar Pad /one piece
31	502827	Top Housing with one piece Jar Pad
32	018796	Switch Plate

**Catalog#**      **Model**  
 CB10J            38BL95

**Waring Factory Service Center**  
 314 Ella T. Grasso Ave.  
 Torrington, CT 06790  
 Tele. 1-800-269-6640  
 Fax 860-496-9017  
 www.waringcommercialproducts.com

<b>Illustration#</b>	<b>Part#</b>	<b>Description</b>
33	019154	Screw (4 required)
34	018794	Switch
35	008412	Screw /switch (2 required)
36	018797	Name Plate
37	018787	Mounting Plate
38	002984	Washer use with 015434 screw (8 required)
39	015434	Screw /holds mounting plate to motor (4 required)
	015434	Screw /holds mounting plate & motor to top hsg. (4 required)
40	501957	Motor
41	018792	Baffle
42	016317	Screw (3 required)
43	018791	Screen
44	015337	Washer /ground
45	016690	Screw /ground
46	013731	Cable Tie (2 required)
	019190	Cable Tie (3 required)
47	501956	Cord Set
48	018811	Strain Relief
49	019098	Screw (4 required)
50	018783	Bottom Housing
51	018790	Foot (4 required)

**Item Not Shown**

- 019790 - Brush & Spring (2 required) /Stature Motor Post Jan. 2004
- 027031 - Brush Cap (2 required) /Stature Motor Post Jan 2004
- 023123 - Aligning Tool (*older units*)

